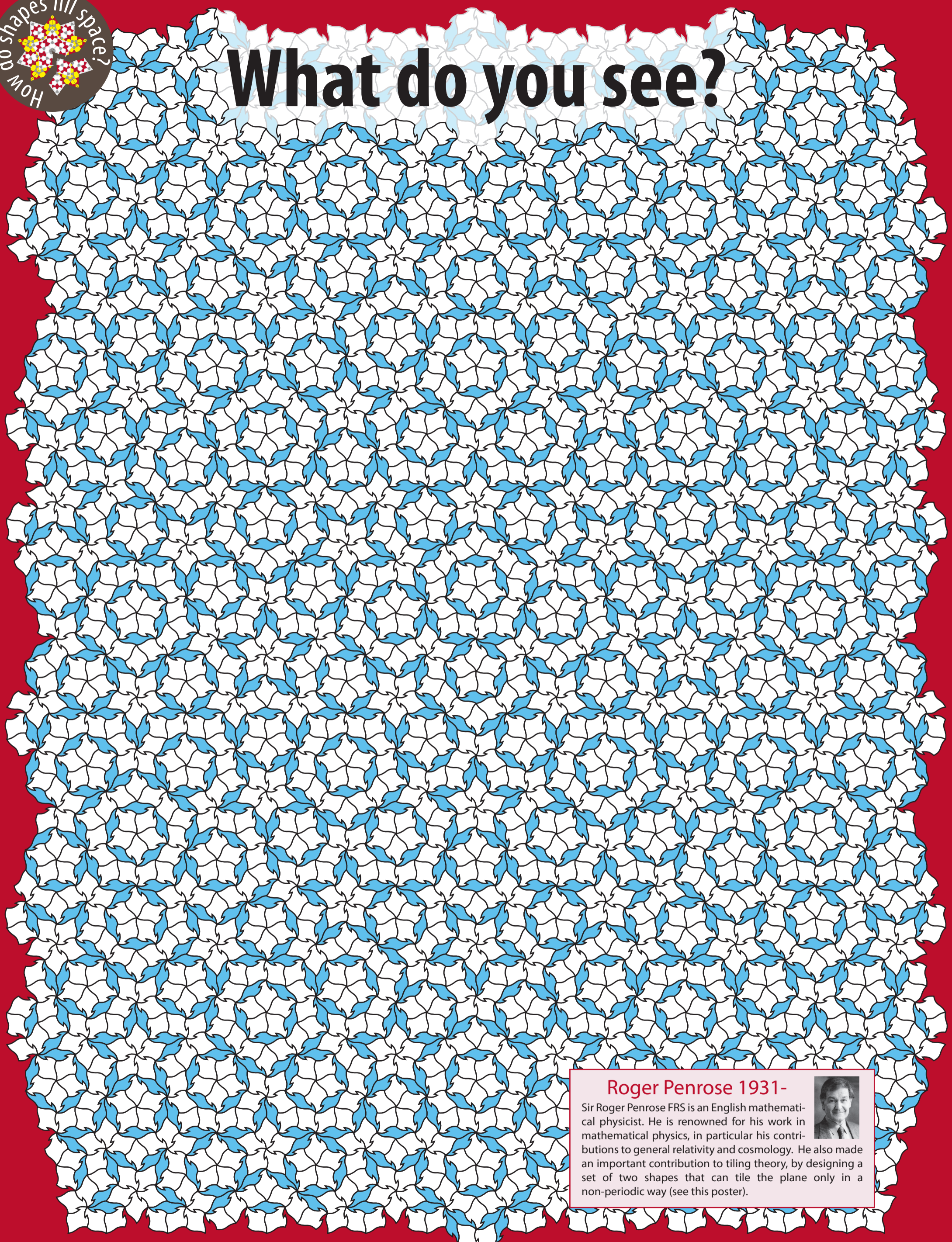


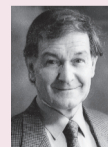


What do you see?



Roger Penrose 1931-

Sir Roger Penrose FRS is an English mathematical physicist. He is renowned for his work in mathematical physics, in particular his contributions to general relativity and cosmology. He also made an important contribution to tiling theory, by designing a set of two shapes that can tile the plane only in a non-periodic way (see this poster).



SELECTED
2009

THE ROYAL SOCIETY
SUMMER SCIENCE EXHIBITION

EPSRC

Imperial College
London

University of
Leicester

RI
The Royal Institution
of Great Britain

zomeTool

POLYDRON

Edmund Harriss, Uwe Grimm, Richard Henry
John Hunton, Vinay Kathotia, Jeroen Lamb